



CN80 Coil Nailer



OPERATING & MAINTENANCE MANUAL



WARNING

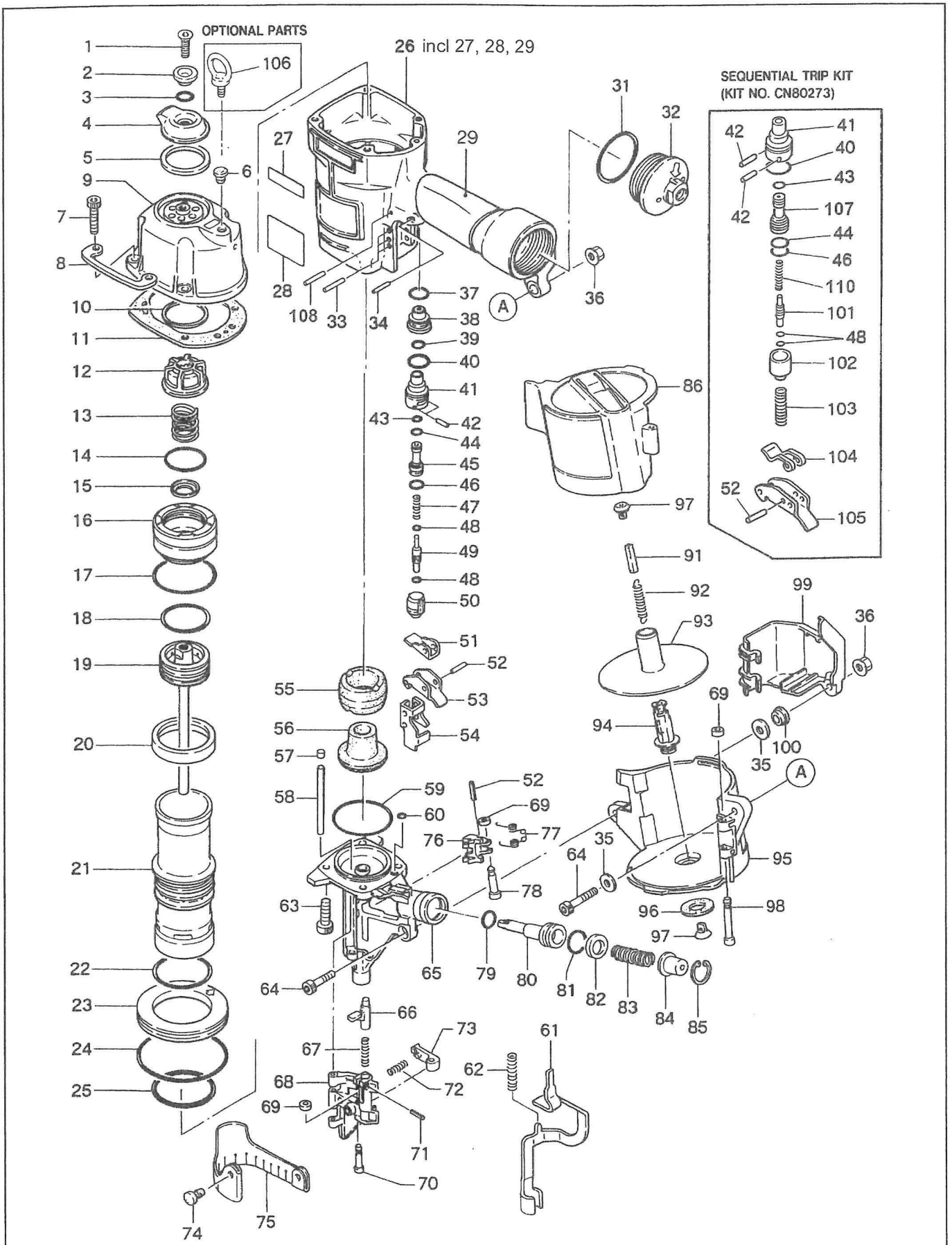
BEFORE USING THIS TOOL, STUDY THIS MANUAL TO ENSURE SAFETY WARNING AND INSTRUCTIONS.

KEEP THESE INSTRUCTIONS WITH THE TOOL FOR FUTURE REFERENCE.

APRIL 2021

CN80

EXPLODED VIEW AND SPARE PARTS LIST



Parts List for MAX CN80 Pneumatic Nailer

Part No	Part Code	Description	Part No	Part Code	Description
1	AA82427	SCREW 8 X 20	56	CN31564	BUMPER B
2	CN32631	EXHAUST COVER HOLDER	57	CN31594	PIN HOLDER
3	HH11132	O-RING 1AP10A	58	FF31127	PIN 1127
4	CN37675	EXHAUST COVER	59	HH19139	O-RING A 1.5 X 53.5
5	CN37376	EXHAUST SEAL	60	HH19125	O-RING A1.6 X 4.2
6	TA12319	GROMMET	61	CN35831	CONTACT ARM
7	BB40422	SCREW 6 X 30	62	KK23223	SPRING 3223
8	CN37550	PROTECTOR	63	BB40444	M8 X 30 HSHC SCREW
9	CN81208	CYLINDER CAP UNIT	64	BB40469	BOLT 6 X 40
10	CN34458	SPACER, EXHAUST	65	CB37671	NOSE
11	CN37549	CYLINDER CAP SEAL	66	CN37371	DOOR LATCH
12	CN37674	PISTON STOP	67	KK23123	SPRING 3123
13	KK23195	SPRING 3195	68	CN37672	DOOR
14	HH19142	O-RING A 3 X 41.6	69	EE39602	WASHER 7
15	CN37547	HEAD VALVE WASHER	70	FF41286	PIN 1286
16	CN37673	HEAD VALVE PISTON	71	FF21234	W.S. PIN 3 X 12
17	HH19195	O-RING 3 X 56.8	72	KK23109	SPRING 3109
18	HH19196	O-RING 1A 4.9 X 43	73	CN37523	CHECK PAWL
19	CN81206	MAIN PISTON UNIT	74	CN31083	HOOK, DUST COVER
20	CN37527	CYLINDER SEAL	75	CN34456	DUST COVER
21	CN37687	CYLINDER	76	CN34448	FEED PAWL
22	HH19192	O-RING 3.1 X 56.5	77	KK33058	SPRING 3058
23	CN37524	CYLINDER RING	78	FF41263	STEP PIN
24	HH12117	O-RING AG85	79	HH11124	O-RING AP10 T29045 (FORMER HH90124 & TA1)
25	HH11169	O-RING AP56	80	CN37678	FEED PISTON
26	CN81407	FRAME ASSY	81	HH11143	O-RING AP21
27	CN34457	LABEL (CN80)	82	CN37528	FEED PISTON STOP
28	CN37439	WARNING LABEL	83	KK23225	SPRING 3225
29	KN12631	GRIP COVER	84	CN37538	SPRING COLLAR
31	HH12102	O-RING 1 AG 50	85	JJ22407	C-RING 26
32	CN37548	END CAP	86	CN37684	MAGAZINE CAP
33	FF21221	ROLL PIN 3 X 25	91	CN30601	SPACER
34	FF21229	W.S. PIN 3 X 20	92	KK13144	SPRING 3144
35	EE39138	WASHER 138	93	CN35833	NAIL SUPPORT
36	CC00402	NUT M6	94	CN37382	MAGAZINE POST
37	HH11159	O-RING ARP568-016	95	CN37682	MAGAZINE
38	CN37529	TRIGGER VALVE GAUGE	96	EE39603	RUBBER WASHER 14
39	HH11151	O-RING ARP568-013	97	CN37383	SPRING HOOK
40	HH11138	O-RING AP20	98	FF41287	PIN 1287
41	CN32247	TRIGGER VALVE HOUSING (REPLACES CN/KN10387)	99	CN37535	ARM COVER
42	FF30161	PIN 161	100	CN32170	COLLAR
43	KN12642	O-RING AP6	101	CN31715	TRIGGER VALVE STEM CN-670DS
44	HH11209	O-RING 1BP7	102	CN31716	ST TRIGGER VALVE CAP
45	CN31589	PILOT VALVE	103	KK23228	SPRING 3228
46	KN12641	O-RING AP9	104	CN34300	CONTACT LEVER DS
47	KK24123	COMPRESSION SPRING 4123	105	CN30276	TRIGGER (S.T.)
48	HH11901	O-RING 1.4 X 2.5	106	BB10401	EYE BOLT 8 X 15
49	CN31347	TRIGGER VALVE STEM	107	CN33627	PILOT VALVE
50	CN31346	TRIGGER VALVE CAP	108	FF21611	ROLL PIN 3 X 32 AW
51	CN37424	CONTACT LEVER	110	KK23129	SPRING 3129
52	FF21220	PIN 3 X 16			
53	CN37423	TRIGGER			
54	CN37533	CONTACT ARM GUIDE			
55	CN31563	BUMPER A			

